

ALICE C. ERICKSON, B.S.
Home Economics
Framingham Teachers' College

KATHERINE R. GOODWIN, B.S.
Commercial Subjects
Boston University



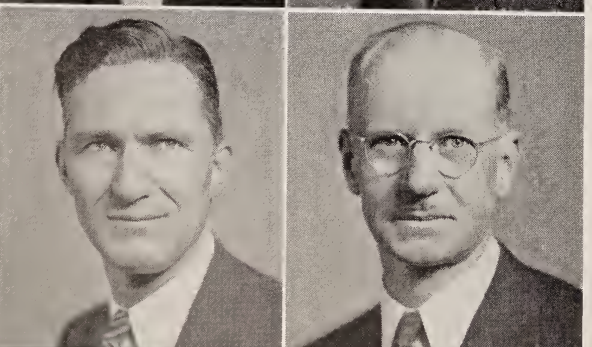
MARGARET A. FRASER, B.S.
Home Economics
University of Connecticut

GEORGE F. HALFORD, M.B.A.
Commercial Subjects
Boston University



LEONARD I. FRENCH
Mechanical Drawing
Pratt Institute

WILLIAM L. HALL
Shopwork
Pratt Institute



CHARLES F. GIPSON, M.Ed.
Physical Education
University of Illinois

HENRY A. HANSON
Shopwork
Pratt Institute



MABEL E. HANKS, B.A.
French
Mt. Holyoke College

GRETCHEN B. HARPER, B.A.
Latin
Wellesley College

We'll Always Remember . . .

Miss Erickson . . . "Hurry and get into your seats."
Miss Fraser . . . Attractiveness and cheerful personality.
Mr. French . . . "Now, boys, let's have a little quiet."
Mr. Gipson . . . "All right! All right!—"
Miss Goodwin . . . "Push your chairs under the table."
Mr. Halford . . . "Sure—Sure—Sure."
Mr. Hall . . . "Get to work, boys."
Miss Hanks . . . "Faites attention, s'il vous plait."
Mr. Hanson . . . "Wasting wood is sabotage."
Miss Harper . . . "And here's a little gem for your notebook."

★ ★ ★ — PORTAL '42 ★ ★ ★ —

SYLVIA ASCHER

"Sybbie" . . . sweet and extremely likable . . . beautiful brown eyes . . . tall and slim . . . cordial manner . . . neat appearance . . . industrious . . . a loyal friend . . . desires to become a dental hygienist.

Chemistry Club; Choir.

WALTER ASKINAS

A capital fellow . . . fine musician . . . lover of Mozart . . . hard worker . . . pleasing wit . . . serious on occasions . . . good mind . . . understanding and determined.

A Cappella; Clubs: Biology, Chemistry, Latin; Honor Society; Jr. Usher.

MARTIN AZARIAN

"Mart" . . . Weaver's conception of a Johnny Weismueller . . . walks only in mirror - like shoes . . . carries a comb just for a curly crop of hair . . . may you go far over those waves!

Basketball Team.

SYLVIA BACHNER

"Syl" . . . calm and capable . . . works with fruitful results . . . great lover of literature . . . delights in collecting records . . . a co-operative classmate . . . apparently quiet until you know her . . . will succeed in business field.

C.H.L.S.; Choir.

MARYLOUISE BALDWIN

"Marylou" . . . pretty and cheerful . . . care-free and fun-loving . . . sincere, good pal . . . soothing personality . . . witty . . . loves Bing Crosby records . . . interested in interior decoration.

RITA BARACCHI

"Re" . . . an ardent Weaver rooter . . . a skilled hairdresser . . . a talented addition to the art . . . possesses a sincere, hearty chuckle . . . pleasant, modest, and sympathetic.

HELEN BARON

"Tiny" . . . petite lady . . . quiet, cheerful disposition . . . dependable worker . . . friendly personality . . . gently sweet . . . looks forward to business career . . . delightful to know.

Choir.

REBECCA BARSCHAK

"Rusty" . . . envied for her beautiful head of red hair . . . slim, poised, well-dressed . . . possesses an aristocratic charm . . . very favorably regarded by the male species . . . elegant and engaging mannerisms.

Cheerleader; Choir; Lookout Editorial Board, Matinee Dance Committee.

BERNICE BASCH

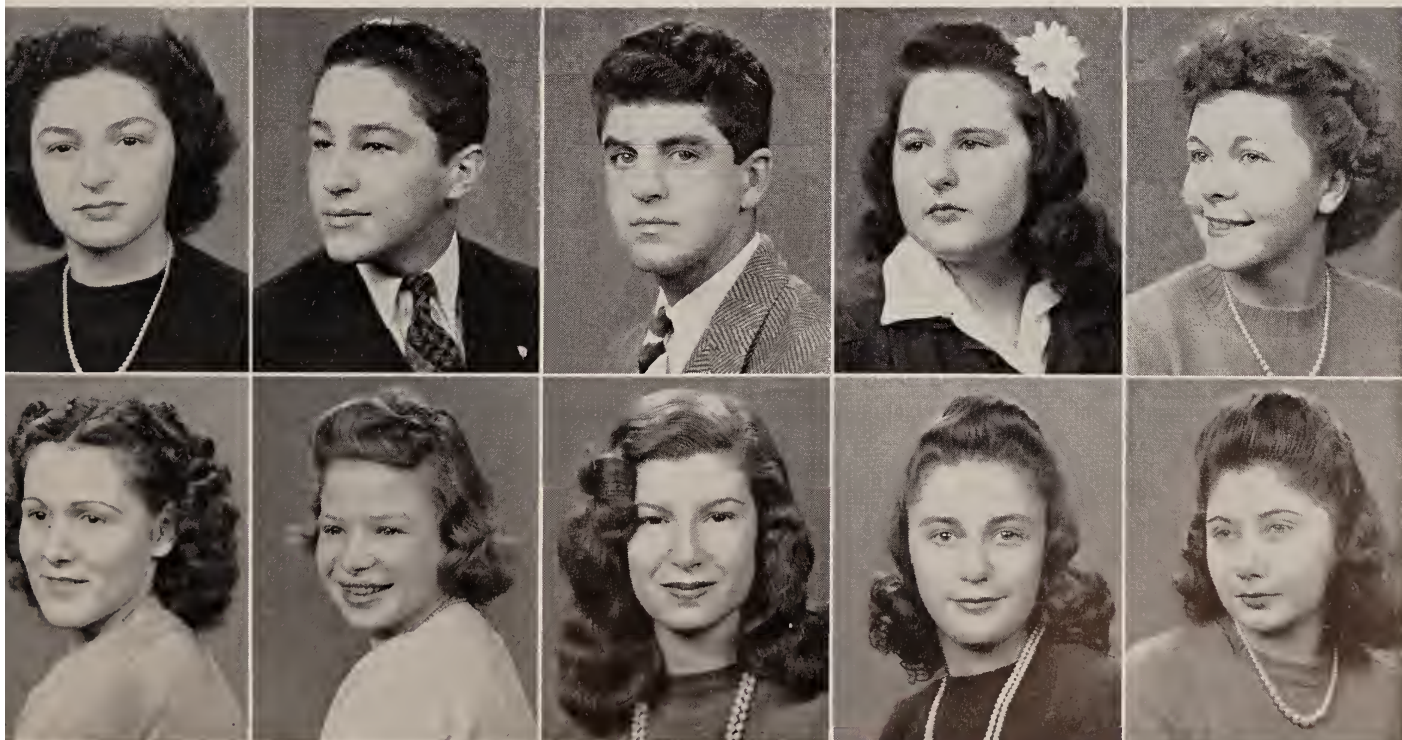
"Bern" . . . popular young miss . . . friendly smile . . . neat figure . . . excels in all sports especially ping pong . . . amiable disposition . . . plans to be secretary . . . high ranking student.

Business Club; Honor Society.

RHODA BEINSTEIN

"Rho" . . . sweet, petite, and demure . . . holder of definite opinions . . . mind of her own . . . leans towards music and dancing . . . cheerful eye-ful.

Chemistry Club.



★ ★ ★ — PORTAL '42 ★ ★ ★ —

BENJAMIN ERTMAN

"Benny" . . . pleasure and action make the hours seem short . . . a man of the outdoors and the late hours . . . striving to be an architectural draftsman.

GILBERT EVANS

"Red" . . . mass of flaming, red hair tops quiet, thoughtful face . . . friendly, cheerful smile . . . serious-minded . . . great football enthusiast, both as participant and spectator . . . best of everything to you, "Red."

PAUL FASI

"Paul" . . . a big "W" is always on his chest . . . with his curly hair and Hercules build, he "wows" the women . . . assuredly he will always be successful. Teams: Football, Track.

LAURA FATT

"Lollie" . . . shorthands, skates, and smiles . . . those 32" pearls just gleam . . . the quiet little miss who brings results . . . looks to the typewriter for her future.

ELIZABETH FELDMAN

"Liz" . . . stately figure . . . curly brown hair . . . retiring ways . . . devoted friend . . . earnest worker . . . possesses a rare streak of gayety . . . inestimable potentialities for greater things. Business Club; Typist for Portal.

MARILYN FELDMAN

"Mary" . . . enthusiastic . . . effervescent giggle . . . swinging stride . . . enjoys working and works well . . . possesses "stacks" of friends . . . loyal and honest . . . very good company. Ingleside Club.

OLIVETT FERGUSON

"Ollie" . . . tall, energetic, and really witty . . . reserved mysteriousness . . . sympathetic nature . . . enjoys all sports, particularly skating and tennis . . . on the quiet side . . . avid photograph collector.

ANNA FIORITA

"Ann" . . . silent attitude . . . streamlined figure . . . modest nature . . . has own group of intimate friends . . . roller skating best loved sport . . . desires to become a secretary.

EDWARD FISHMAN

"Evas" . . . tosses the "ole toothpick" (javelin) around . . . hobby is art . . . likes to draw pictures and cartoons . . . ever ready wink and smile . . . intelligent and sincere friend. Clubs: Biology (Pres.), Chess, German; Honor Society; Jr. Usher; Track Team.

FRANCES FISHMAN

"Fran" or "Veronica" . . . long, golden locks . . . nonchalant . . . great swing addict . . . wants to travel . . . covers the military angle with great proficiency . . . loves to write letters and gets plenty. C.H.L.S.; Choir.

